

Specialist loadbank support

Aggreko Critical Energy Services
Industrial Road
Hertburn Industrial Estate
Washington
Tyne and Wear
NE37 2SA

Tel: +44 (0)191 416 7555
Fax: +44 (0)191 415 9509
Email: loadbanks@aggreko.com
Website: www.aggreko.com

Global presence



At Aggreko we are totally focused on the rental of power, temperature control and oil-free compressed air solutions. We do this on a global basis, with over 100 service centres working alongside and supporting customers in more than 80 countries.

aggreko



Loadbank solutions

Put your power to the test



aggreko



The solution to test your power supply

At Aggreko we understand your vital needs to test power supply systems. Loadbank rental is the most convenient solution for short term testing requirements. Aggreko offers a full range of AC loadbanks from 600kW "resistive only" to 6000kVA combined "resistive and reactive" (inductive) in single or multiple units. Also available are DC loadbanks from 30 to 75kW with voltages up to 500V.

Aggreko has vast experience in finding the correct load test solution 'tailored' to meet your requirements. Varying from a single 600kW low voltage test to large multi-MVA high voltage applications, Aggreko's extensive equipment range also includes a selection of multi-tap transformers which are fitted with high voltage switchgear and protection as standard.

Aggreko's worldwide fleet of loadbanks totals in excess of 200MVA.

Loadbank rental What do you need to prove?

- Turbine generators
- Diesel generators
- Full system integration
- Low power factor simulation
- Frequency converters
- UPS Base load applications
- Electrical distribution panels and systems
- Battery discharge (constant current)
- Rectifiers
- DC power supplies



Loadbank solutions

Features

- Purpose built
- Data acquisition (volts & Hz transient graphs)
- Variable power factor control
- Automatic load test program capability
- Three phase instrumentation
- LV & HV testing
- Remote control (up to 3km)
- Complete turnkey solutions

Benefits

- Pre-delivery customer reassurance
- Equipment performance guarantee
- Peace of mind
- Proven commercial savings
- Avoidance of contract penalties
- Maintaining equipment reliability & company reputation
- Full load test documentation for quality auditing purposes
- On site technical advice
- Technical site-surveys
- Method statements and schematics
- Installation and commissioning service





Resistive only loadbanks

Aggreko's resistive only fleet consists of 600, 1000 and 5000kW single units, which can also be paralleled together to provide any larger load capacity. Each loadbank is designed to operate at unity (1.0pf) power factor, 400 to 480V at 50 and 60Hz.

The Intelligent Hand-held Terminal (IHT) provides you with full instrumentation (Volts, Amps, Hz, kW & pf) and the ability to control loadbank in 1kW incremental load steps. All instrumentation measurements are made using three highly accurate voltage and current transformers located within the loadbank.



Resistive & reactive loadbanks

Aggreko's resistive and reactive fleet consists of 750, 1250, 2500 and 6000kVA single units, which can also be paralleled together to provide any larger load capacity. Each loadbank is designed to operate at variable power factor for 400 to 480V at 50 and 60Hz.

The Intelligent Hand-held Terminal (IHT) provides you with full instrumentation (Volts, Amps, Hz, kW, kVA & pf) and the ability to control the loadbank in 1kVA incremental load steps. This uniformed control system provides consistency and familiarity throughout Aggreko's AC loadbanks and combined with the additional feature of multi-language display, offers the customer the complete user friendly method of operation.

With the exception of the skid mounted 750kVA unit, all combined resistive and reactive equipment is housed in standard ISO containers.



Loadbank solutions

Direct current (DC) loadbanks

Aggreko's DC loadbank fleet consists of various voltage and current rated units. Typically these can operate between 24 to 500V and 125 to 1800A. Recently introduced units have constant current capability up to 600A.

These loadbanks are controllable in 1Amp load steps via a 'dial type' controller. Their compact design enables the units to be sited near to the point of test negating the need for long hazardous cable runs.



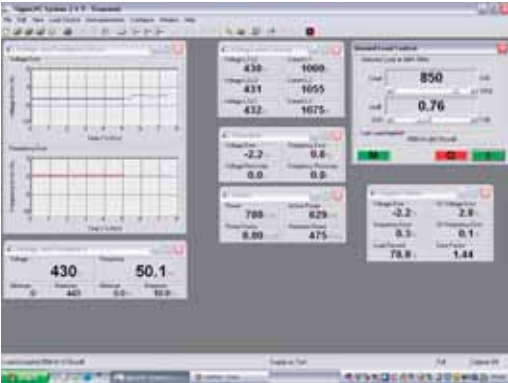
Step-down transformers

All loadbanks can be used in conjunction with the complete fleet of Aggreko step-down transformers, which range from 625 to 6300kVA. The transformers are housed in standard ISO containers complete with HV switchgear and operate at voltages from 600V to 24kV enabling the customer to undertake testing at higher voltages.

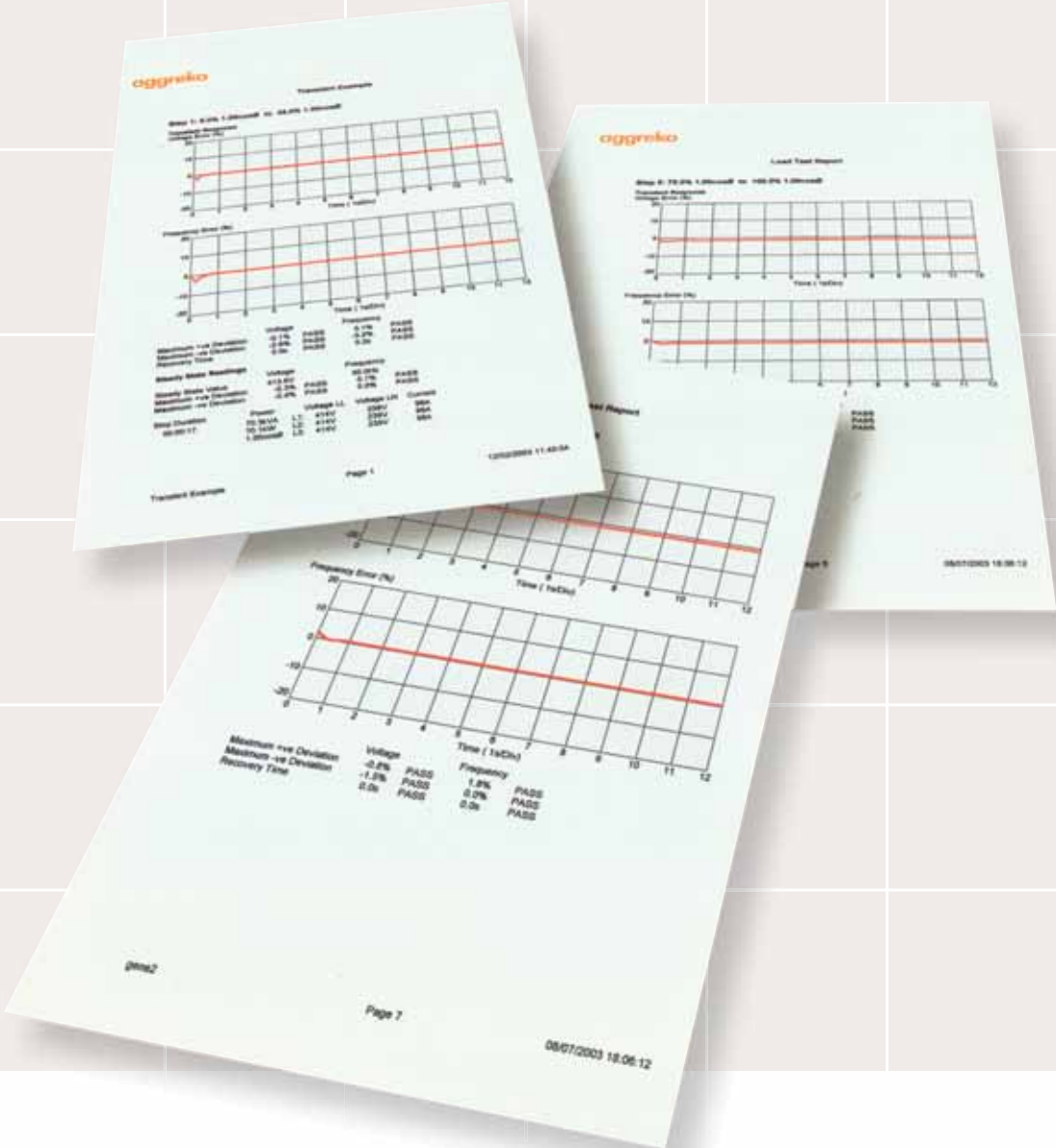


Loadbank solutions

Aggreko PC system



The Aggreko PC system can be used as an alternative to the Intelligent Hand-held Terminal (IHT) on any Aggreko AC loadbank. The PC system provides enhanced load control along with transient speed instrumentation, real time graph display and full data acquisition and reporting.



Technical specifications

AC loadbanks

Description	L	W	OH mm	Weight (kg)
600 kW Resistive only	1950	1320	1650	800
1000 kW Resistive only	2530	1600	2230	1420
5000 kW Resistive only	6100	2440	2600	18000
750 kVA Resistive/Reactive	2530	1970	1739	3500
1250 kVA Resistive/Reactive	3000	2440	2600	6500
2.5/3.0 MVA Resistive/Reactive	6100	2440	2600	10600
6.0 MVA Resistive/Reactive	6100	2440	2600	18000

DC loadbanks

Description	L	W	OH mm	Weight (kg)
600/330Amp 50/100V DC	822	662	632	100
250/125Amp 120/240V DC	600	500	800	50
2500A/775Amp 28V DC (GPU)	600	500	800	50
600A 12/60V DC	800	600	650	80
1500A 250/500V	2530	1970	1740	2500

AC transformers

Model MVA	Enclosure	Voltages	Length mm	Width mm	Height mm	Weight (kg)
1.25	ISO 10'	440-1100V	3000	2400	2600	6500
1.50	ISO 10'	400-3.3-6.6-11kV	3000	2400	2600	7900
2.50	ISO 10'	400-up to 24kV	3000	2400	2600	8000
3.15	ISO 20'	400-up to 24kV	6000	2400	2600	12500
5.00	ISO 20'	400-up to 24kV	6000	2400	2600	18000
6.30	ISO 20'	400-up to 24kV	6000	2400	2600	24000

To complement our fleet of generators and loadbanks, Aggreko has a large fleet of transformers for either stepping voltage up or down depending upon the application. Aggreko transformers in most cases are containerised and are supplied complete with over current and short circuit protection on the HV breaker.